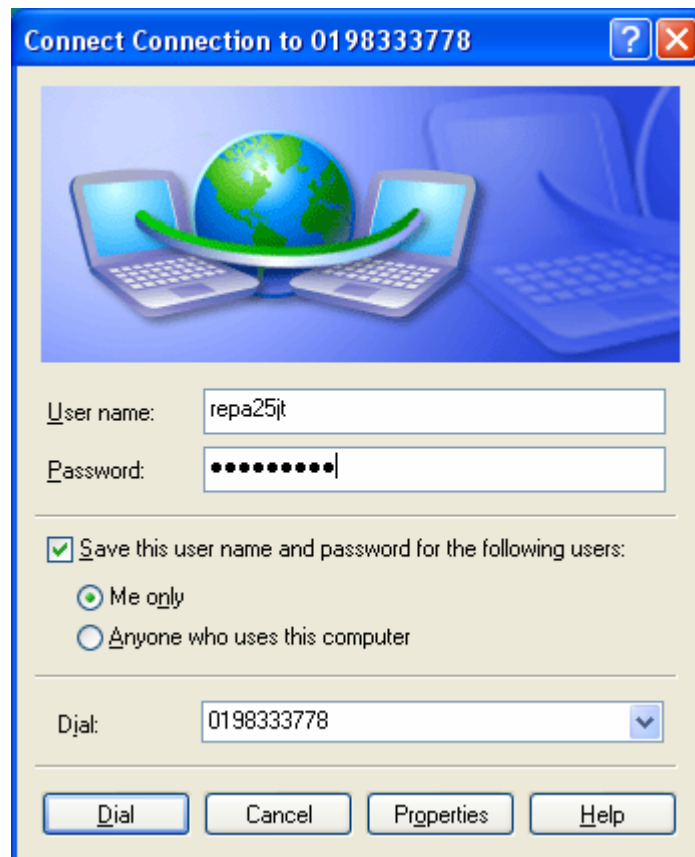




To Install Replacement Planet Pre-paid Internet Card

1. Click on Internet Explorer or Outlook Express
2. When the 'Dial up' window appears (see below – yours may look different)
3. Replace the Username with the one on your new card
4. Scratch the Password area on the new card and replace the Password on your computer
5. Click dial and wait for the connection (could take a little longer first time)
6. KEEP THE CARD in a safe place – you may need it again.



Chris. Cartledge
SCARF IT Program Manager
Phone 02) 4226 2323